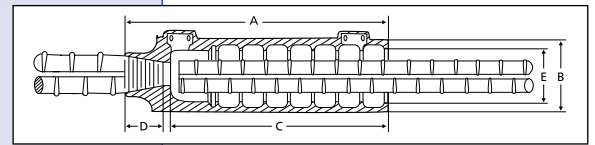
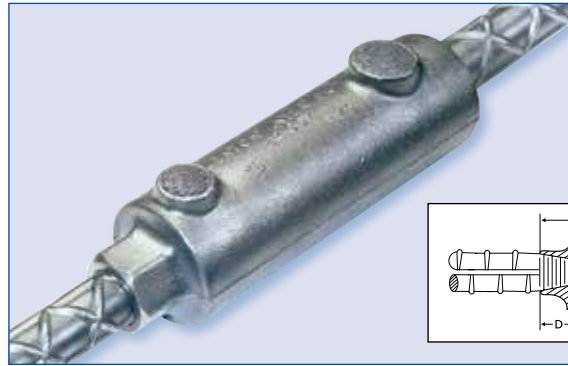


Features

- Provides structural integrity when joining rebar in precast construction
- Offers cost effectiveness, speed and increased design flexibility
- Allows load-bearing applications such as columns beams and shear walls to be incorporated into projects using segmental precast construction
- Joins #5 (16 mm) through #18 (57 mm) rebar, conforming to ASTM® A615, A706, CSA or BS standards
- Forgiving to misalignment
- Capable of exceeding ACI® and IBC® Building Code Requirements for Type 1 and Type 2. Exceeds BS splice requirements



Description

The LENTON INTERLOK splice is specifically designed to structurally join precast structural elements such as columns and shearwalls. At the precast plant, the sleeve is joined to the LENTON threaded rebar and positioned within the form. At the jobsite, the LENTON INTERLOK sleeve is filled with a proprietary cementitious grout, creating an interlocking bond between the coupler and the adjoining bar. Bars can be purchased pre-threaded or Pentair can furnish the precaster with a LENTON threading machine. Contact Pentair for your nearest supplier.

Splice Performance

The assembled connection is capable of exceeding the ACI®, and IBC® Building Code requirements for full tension mechanical splice Type 1 and 2. For a copy of the IAPMO®-UES Report 0129, please visit www.erico.pentair.com.

Typical Applications

Precast Construction:

- Precast Shearwalls
- Precast Columns
- Bridges
- Air Traffic Control Towers
- Stadiums

| Bar Size | Part No. | A | B | C | D | E | Weight | Qty/Box |
|----------|----------|-----------|----------|---------|----------|---------|--------|---------|
| #5 | LK5 | 7-13/16" | 2-9/16" | 6-1/8" | 7/8" | 1-7/8" | 4.4 | 12 |
| #6 | LK6 | 7-13/16" | 2-9/16" | 6-1/8" | 1-1/8" | 1-7/8" | 4.3 | 12 |
| #7 | LK7 | 7-13/16" | 2-9/16" | 6-1/8" | 1-1/4" | 1-7/8" | 4.3 | 12 |
| #8 | LK8 | 8-5/8" | 2-11/16" | 7" | 1-3/8" | 2" | 4.7 | 8 |
| #9 | LK9 | 9-3/4" | 2-13/16" | 8" | 1-1/2" | 2-1/8" | 5.4 | 8 |
| #10 | LK10 | 10-13/16" | 3" | 9" | 1-9/16" | 2-5/16" | 6.3 | 8 |
| #11 | LK11 | 11-15/16" | 3-1/8" | 9-7/8" | 1-11/16" | 2-7/16" | 8.0 | 8 |
| #14 | LKT14 | 15-3/16" | 3-11/16" | 12-3/4" | 2-1/8" | 2-3/4" | 16.0 | 4 |
| #18 | LKT18 | 20-5/16" | 4-1/2" | 17" | 2-3/4" | 3-1/4" | 44.0 | 1* |

*shipped on pallet

WARNING

Pentair products shall be installed and used only as indicated in Pentair's product instruction sheets and training materials. Instruction sheets are available at www.erico.pentair.com and from your Pentair customer service representative. Improper installation, misuse, misapplication or other failure to completely follow Pentair's instructions and warnings may cause product malfunction, property damage, serious bodily injury and/or death, and void your warranty.

ACI is a registered trademark of the American Concrete Institute.

ASTM is a registered trademark of ASTM International.

CSA is a copyright of the Canadian Standards Association International.

IAPMO is a registered trademark of International Association of Plumbing & Mechanical Officials.

IBC is a registered trademark of the International Building Code.

© 2005, 2013, 2015 Pentair All Rights Reserved

Pentair, CADDY, CADWELD, CRITEC, ERICO, ERIFLEX and LENTON are owned by Pentair or its global affiliates.

All other trademarks are the property of their respective owners. Pentair reserves the right to change specifications without prior notice.